

# KOEHLER CUP - Ashtabula to Erie

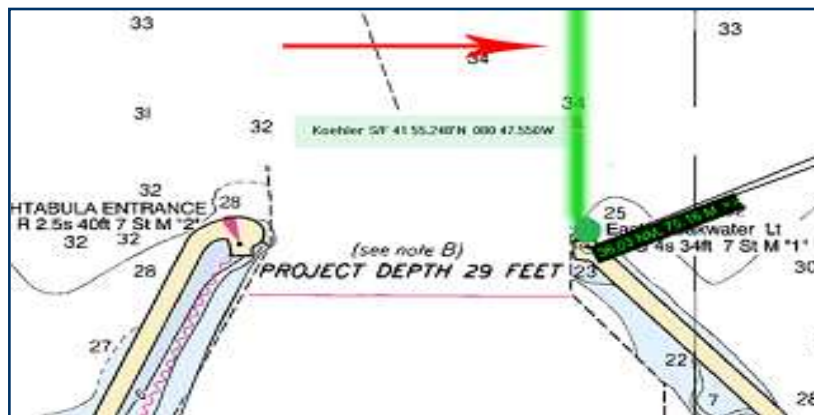
Distance: 36.62 miles      Time Limit: 13hrs for first boat.

Start:            Ashtabula Pier light                      N 41 55 248    W 080 47 55 approx.

Finish:          Lake Mark R2 to PORT                      N 42 09 930    W 080 03 26 approx.

**Start:** In the absence of a race committee with physical start line, the start line is a line set @ 180° magnetic to the Ashtabula Pier Light located on the East Seawall of the Harbor Entrance. The start line is limited to approximately ¼ nautical mile (1,500') in length beginning at the pier light and bearing in the direction of magnetic north.

## Start at Ashtabula Light



**Finish:** Outside the Erie harbor entrance leaving "R2" to PORT. [Finish between R2 and the channel lighthouse.](#) Take your own time and the boat behind and submit your finish form as required.

