

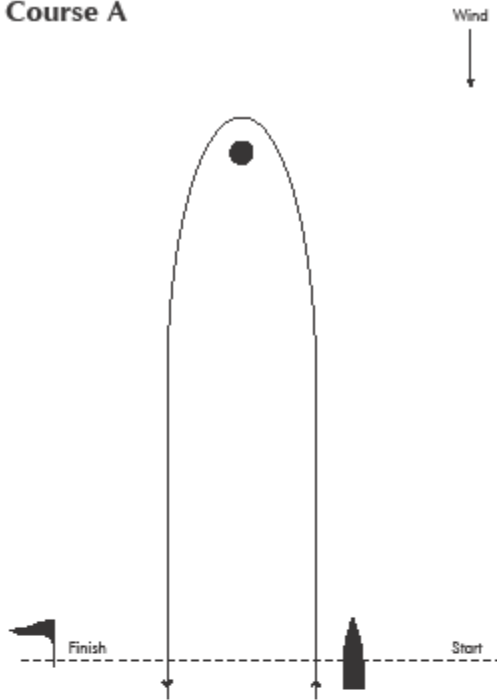
RACE COURSE CONFIGURATIONS

COURSE – ALPHA - 2 legs

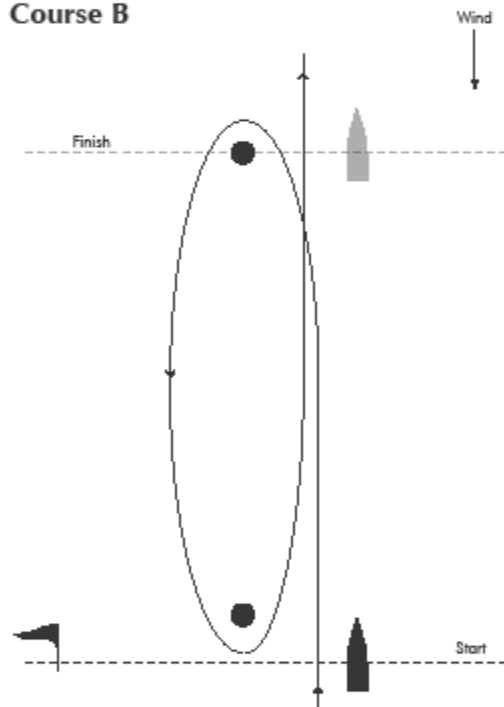
COURSE – BRAVO - 3 legs

COURSE – CHARLIE - 4 legs

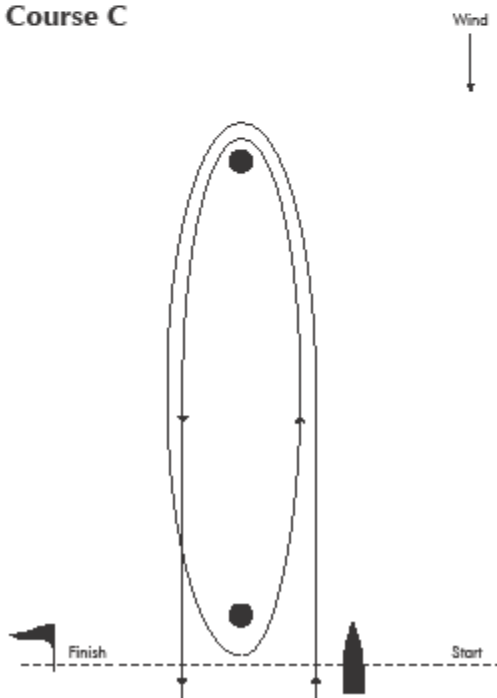
Course A



Course B

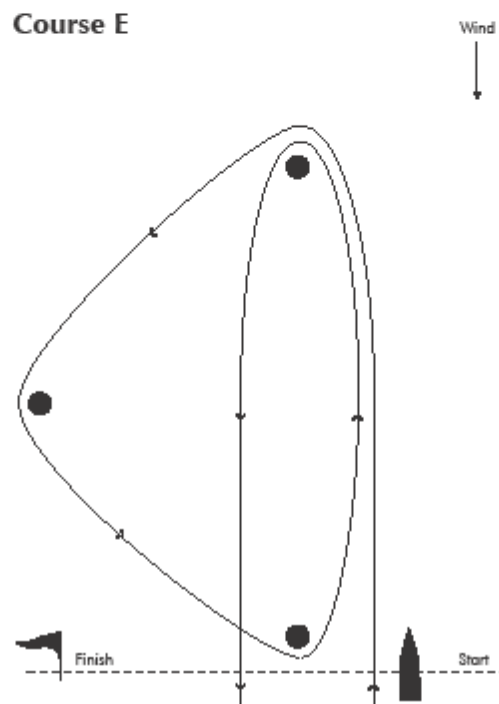
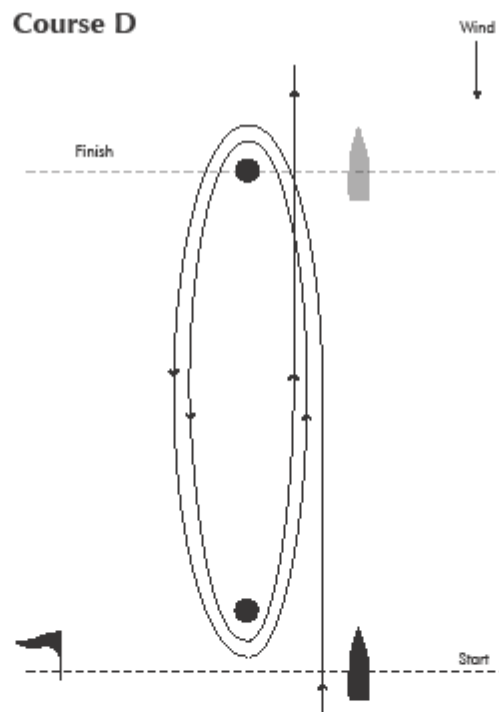


Course C



COURSE – DELTA - 5 legs

COURSE – ECHO triangle + windward + leeward leg



Memorial Day Light House Race

Distance: approx. 12.22nm *

Course: EYC LH - G1- WB-R2

Marks G1 and WB are to be passed to Port.

G 1: aprox N° 42, 09.827' W° 080, 03.180'

Weather Buoy, WB exact position is subject to annual change. Actual location and race distance* will be published prior to race.

Start: EYC lighthouse start/finish line.

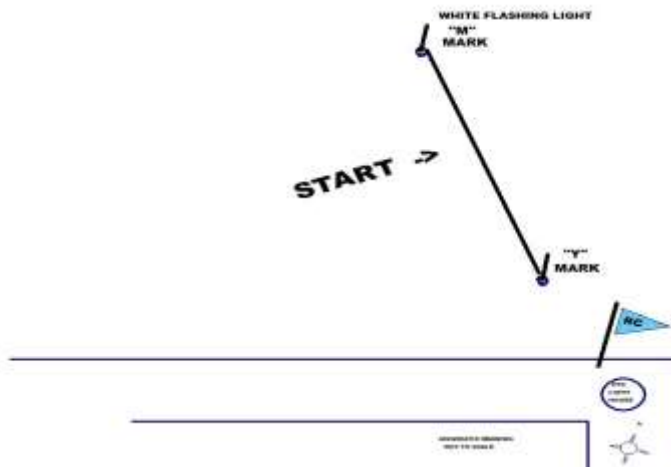
Finish: Between R2 and the RC.

If the RC is not on station, finish within one boat length of R2 leaving R2 to PORT, i.e. finish between the lighthouse and R2. The finish line is a projection of a line from the channel lighthouse to R2.

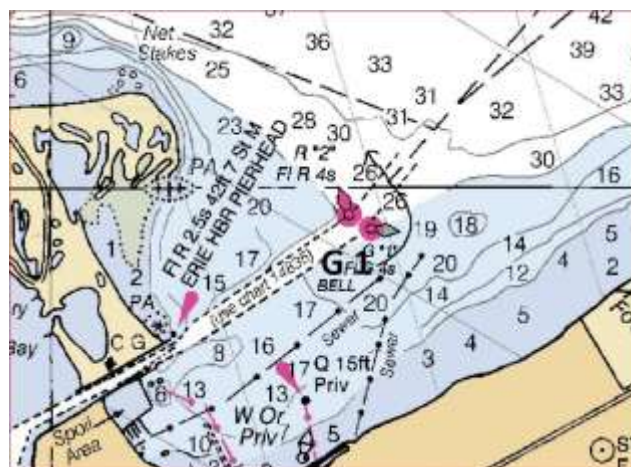
Record your own time and the time of the boat behind as required in Section XV, 4 on page 13.

Time limit: 5 hours for the first boat

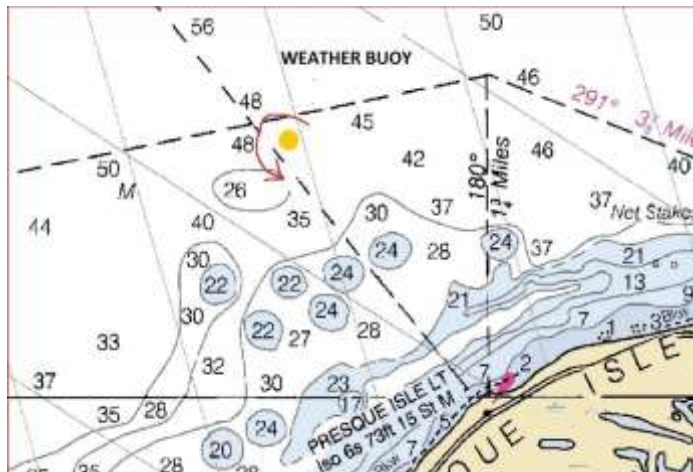
START



MARK G 1



MARK WB



FINISH



Night Light House Race

Distance: 15.67nm *

Course: EYC LH - G1 - WB - EYC LH

Marks G1 and Weather Buoy are to be passed to Port.

G 1: aprox N° 42, 09.827' W° 080, 03.180'

Weather Buoy, WB exact position is subject to annual change. Actual location and race distance* will be published prior to race.

Start: EYC lighthouse start/finish line.

Finish: EYC lighthouse start/finish line.

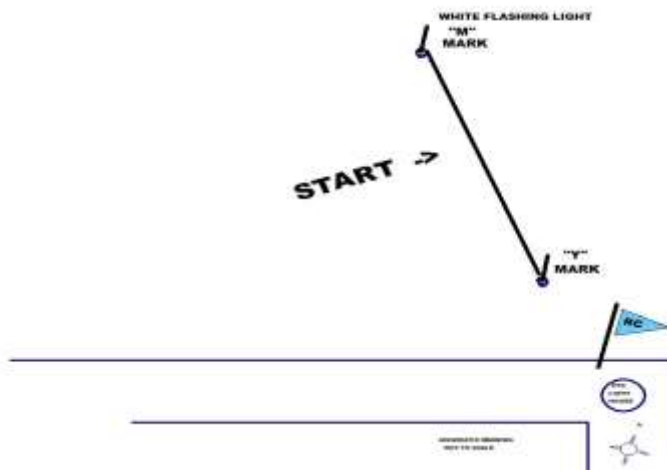
Check in with the RC as you finish and make sure the RC can view your sail numbers.

If the RC is not on station, record your own time and the time of the boat behind on the provided Finish Form as required in Section XV, 4.

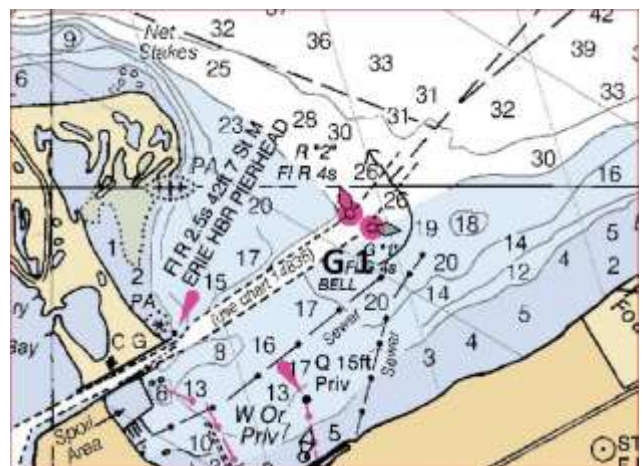
Time limit: 6 hours for first boat.

REMINDER – The right of way rules change at sunset.

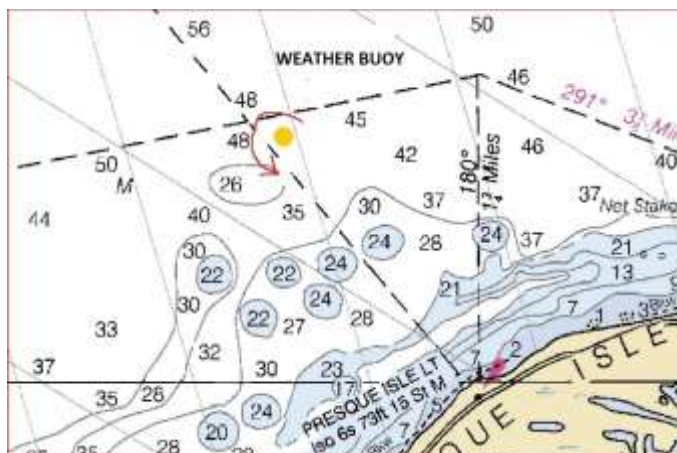
START



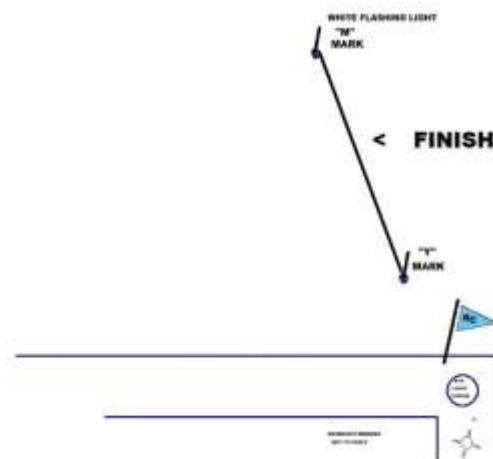
MARK G 1



MARK WB



FINISH



KOEHLER CUP - Erie to Ashtabula

Distance: 36.62 miles

Time Limit: 13hrs for first boat.

Start: Lake Mark R2

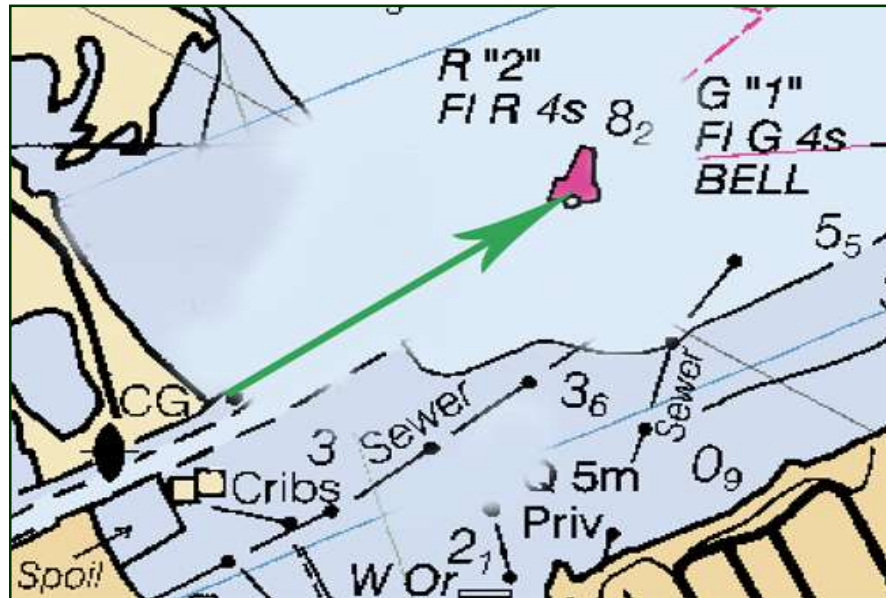
N 42 09 930 W 080 03 26 approx.

Finish: Ashtabula Harbor Entrance

N 41 55 248 W 080 47 55 approx.

The Start: The line is between R2 and the yellow flag on the committee boat. If the committee boat is not on station, the start line is a line between R2 and the North Channel wall light house.

**Start @
"R2"**



The Finish line is between the Ashtabula harbor entrance lights at the east pier head and the west pier head as pictured below. Take your own time and record the time of the boat behind you using the finish form provided.



KOEHLER CUP - Ashtabula to Erie

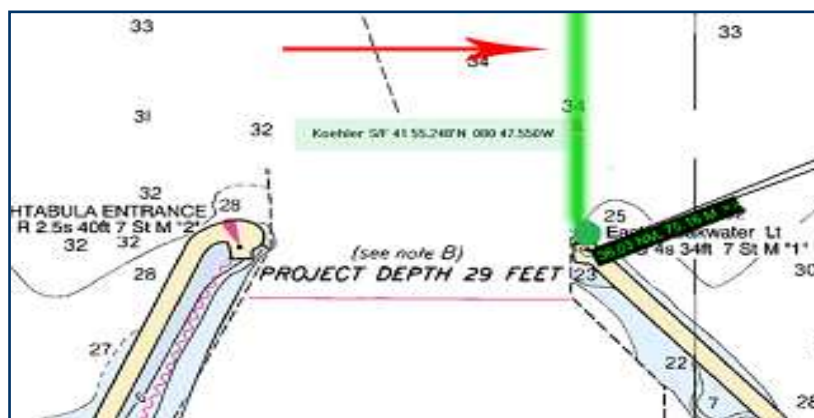
Distance: 36.62 miles Time Limit: 13hrs for first boat.

Start: Ashtabula Pier light N 41 55 248 W 080 47 55 aprox.

Finish: Lake Mark R2 to PORT N 42 09 930 W 080 03 26 aprox.

The Start: In the absence of a race committee, the start line is a line set @ 180° magnetic to the Ashtabula Pier Light located on the East Seawall of the Harbor Entrance.

Start at Ashtabula Light



FINISH: within 1 boat length of buoy “R2” outside the harbor entrance leaving “R2” to **PORT** i.e. finish between R2 and the lighthouse. The finish line is an extension of a line from the north pier channel lighthouse to “R2”. Take your own time and the boat behind and submit your finish form a.s.a.p.



BLUFF BAR RACE for the WOLFORD TROPHY

EYC - Bluff Bar – Port Dover

Distance: 43.2 nm

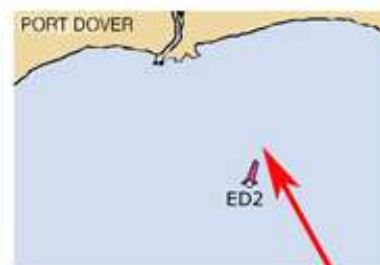
Time Limit: 14 hrs for first boat.



Erie - Start



Bluff Bar



Dover-Finish

Charts courtesy of Russ Thompson

COURSE: “EYC”-“EAII”-“ED2”

START: EYC Lighthouse start line

MARKS: “EA II” (Bluff Bar) Leave to **STARBOARD**

N 42° 35.75 W 080° 09.55 aprox

FINISH: ED 2 (Port Dover) Leave to **PORT**

N 42° 45.82 W 080° 11.72 aprox

THE STARTING LINE IS A LINE BETWEEN “M” AND THE YELLOW STAKE OFF OF THE EYC LIGHTHOUSE.

THE FINISH: FINISH WITHIN ONE BOAT LENGTH OF ED2 LEAVING ED2 TO **PORT.**

TAKE YOUR OWN TIME AND RECORD THE TIME OF THE BOAT BEHIND YOU USING THE FINISH FORM.

Alternate Start at R2: DISTANCE: 37.7 nm 13 HR TIME LIMIT for first boat

INTERSTATE TROPHY RACE

EYC to BYC

Distance: 70.91 nm **Time Limit:** 24 hrs for first boat.

Start: Erie Yacht Club

The start line is between mark "M" and mark "Y" adjacent to the EYC Lighthouse.

Marks of the course: none

Finish: Buffalo Harbor - North Channel Entrance

The finish line is between government marks **G"5"** and **R"6"** marking both ends of the North Channel Harbor Entrance. See sketch below.

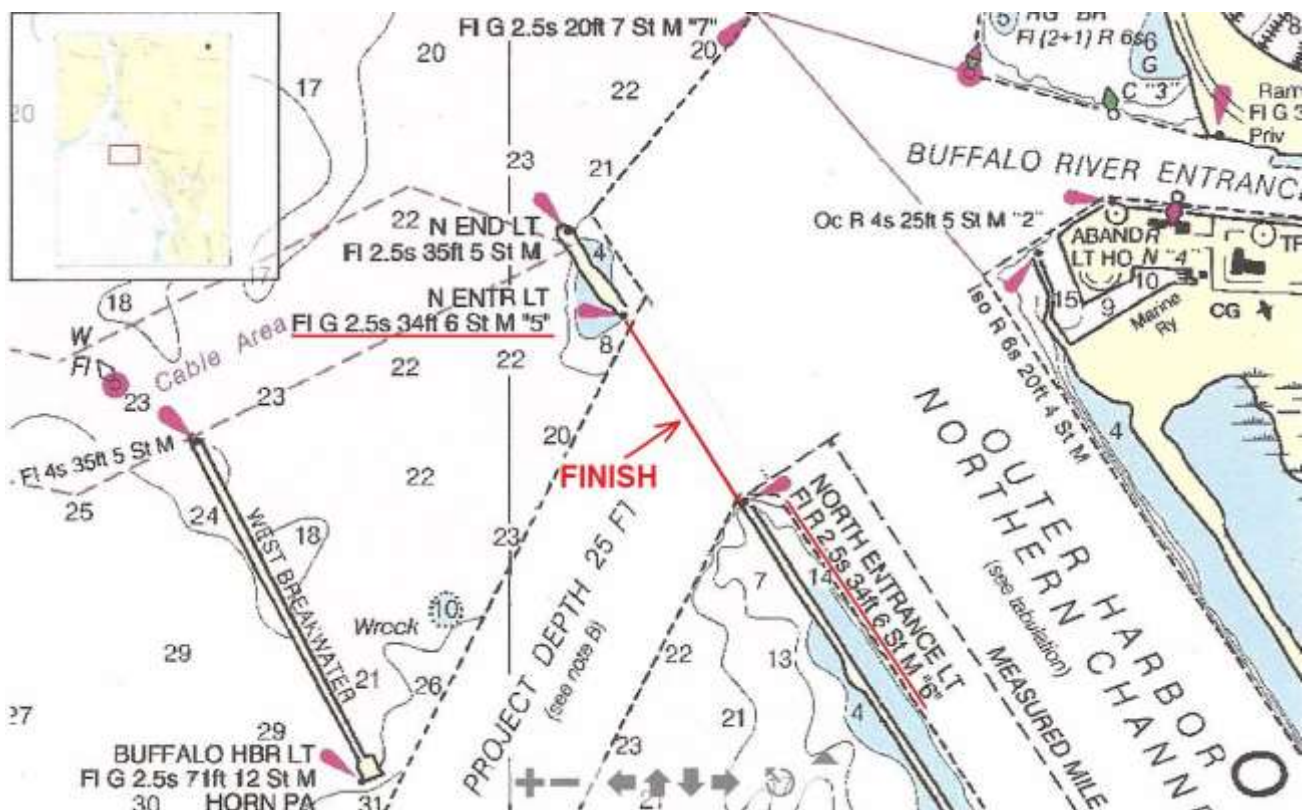
Approximant locations:

G"5" **N 42° 52.59'**
 W 078° 53.88'

R"6" **N 42° 52.45'**
 W 078° 53.75'

Take your own GPS finish time and record times as required by the race instructions. Submit them using the fleet finish form.

Rendezvous: Buffalo Yacht Club – Porter Avenue location



FAMILY JAM LIGHTHOUSE START RACE INSTRUCTIONS

These instructions modify the Racing Rules of Sailing and apply only to Family Jam Races starting/finishing at the EYC lighthouse. They DO NOT apply to any other JAM, FAMILY JAM or SPINNAKER races.

RACES STARTING AT THE EYC LIGHTHOUSE

These races start and finish near the Erie Yacht Club Lighthouse at the start/finish line and are noted on the schedule as LH. The Race Committee will be located on the EYC lighthouse deck, not on the *Flagship*. The courses will be posted on the Course Board located on the north wall of the EYC. The start/finish line is always between the “M” mark and “Y” mark next to the Lighthouse. See start/finish area chart below.

The **STARTING LINE** is between “M” mark to Port and the Y mark to Starboard.

The **FINISH LINE** is between “M” mark to Starboard and the Y mark to Port.

CLASS PENNANT

Each boat must fly their assigned class pennant designating its class to enable the RC to identify each boats class. Boats without class pennants will not be scored.

CLASSES & STARTING SEQUENCE:

The classes may start in any sequence as determined by the race committee e.g. C, D, A, B. Each yacht must pass near the lighthouse on starboard tack prior to the first preparatory signal in order for the sail number to be recorded and the yacht acknowledged. Failure to comply may result in the yacht being recorded as a “Did not Start” in the Race Committee’s sole discretion.

GENERAL RECALL

RRS #29.2 When at the starting signal the race committee is unable to identify boats that are on the course side of the starting line or to which rule 30 applies, or there has been an error in the starting procedure, the race committee may signal a general recall (display the First Substitute with two sounds). The warning signal for a new start for the recalled class shall be made one minute after the First Substitute is removed (one sound), and the starts for any succeeding classes shall follow the new start.

COURSES

All races start and finish at the EYC lighthouse start/finish line. The RC will announce the course to be sailed via marine radio prior to the warning signal. The courses will be designated by the letter designation for each mark of the course to be rounded in the order stated. Examples are: O-S, S-R, R-N, R, S. Port or Starboard mark rounding will be designated by the RC with **RED** or **GREEN** flags.

Note that the course may not be the same for all classes to insure that all classes finish within the time limit. The Principal Race Officer (PRO) will make the appropriate course selection and notify the RC. The PRO criteria for course selection are to sail at least one windward leg and have all boats in each class finish within the time limit.

CHANGE OF COURSE

The course may be changed or shortened for individual classes. The changed or shortened course shall be signaled before the first boat in the affected class rounds the mark that begins the leg being changed.

Note: Class Flags are required to be flown by the competitors to enable the RC to identify the class of an individual boat.

The RC may alter the originally announced course by changing or deleting any un-sailed legs by broadcast via VHF radio including the two-horn sound signal followed by a description of the course change. The RC shall repeat these broadcasts of the revised course as necessary.

TIME LIMIT and SCORING

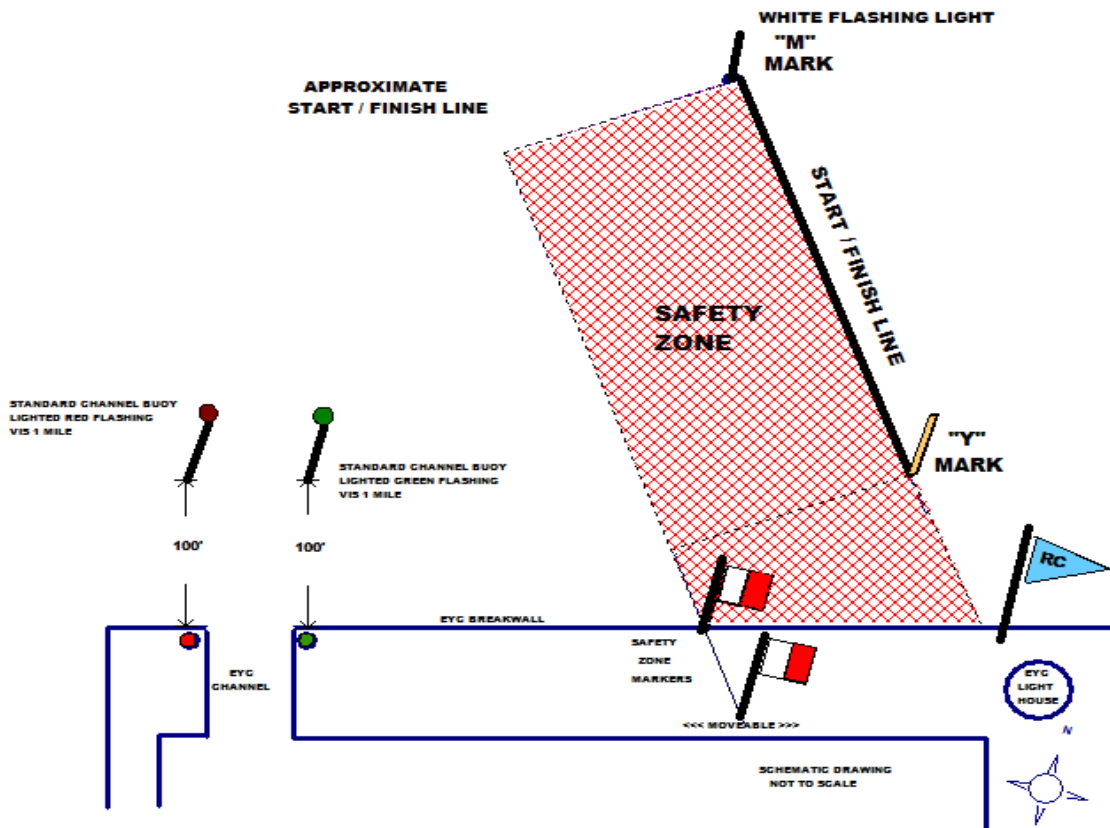
The time limit for every Lighthouse Start race is 2 hours from their individual class starting signal. All boats still racing when the two-hour Time Limit Expires will be scored (TLE) equal to the number of finishers in their class plus one.

One boat per class is required to start a race to qualify as a race in the F-JAM Division only.

SAFETY ZONE

This is a rectangular or nearly rectangular area established west of the Start/Finish Line. This Safety Zone is bounded on the north and south by the starting line marks and the EYC brake wall, on the east by the start/finish line and on the west by a Red & White markers located on shore. Boats are permitted in the Zone only during their class 5 minute starting sequence. Boats in the Zone out of sequence are subject to immediate disqualification. After the Finish, the Zone is to be cleared immediately to allow room for the following finishers.

FAMILY JAM LIGHTHOUSE START / FINISH LINE





**YACHT FINISH FORM
ERIE YACHT CLUB RACING FLEET**



Form to be completed when the Race Committee is not on station at the finish line.

please circle SPINNAKER or JAM

REPORTING YACHT
SAIL NUMBER
TIMEKEEPER
PHONE #

YACHT AHEAD: _____

GPS TIME

	HOURS	MINUTES	SECONDS
SAIL # _____			
APPROX. TIME AHEAD			

YOU

GPS TIME

CLASS START TIME:			
YOUR FINISH TIME:			

ELAPSED TIME (Computer will calculate)

YACHT BEHIND: _____

SAIL # _____

GPS TIME

FINISH TIME:			
--------------	--	--	--

SKIPPER SIGNATURE _____

Race Date _____

BOATS WITHOUT A FINISH FORM RECEIVED WITHIN THE TIME LIMIT WILL BE SCORED DNF.
 Email and other media messages are not acceptable.
 Submit form to RC or scorer as soon as possible, but no later than 2 hours after your finish time.
 Placed form in the EYC race bulletin board if no RC member is present.



**YACHT FINISH FORM
ERIE YACHT CLUB RACING FLEET**



Form to be completed when the Race Committee is not on station at the finish line.

please circle SPINNAKER or JAM

REPORTING YACHT _____
 SAIL NUMBER _____
 TIMEKEEPER _____
 PHONE # _____

YACHT AHEAD: _____

	GPS TIME		
	HOURS	MINUTES	SECONDS
SAIL # _____			
APPROX. TIME AHEAD			

YOU

	GPS TIME		
CLASS START TIME:			
YOUR FINISH TIME:			
ELAPSED TIME (Computer will calculate)			

YACHT BEHIND: _____

	GPS TIME		
SAIL # _____			
FINISH TIME:			

SKIPPER SIGNATURE _____

Race Date _____

BOATS WITHOUT A FINISH FORM RECEIVED WITHIN THE TIME LIMIT WILL BE SCORED DNF.
 Email and other media messages are not acceptable.
 Submit form to RC or scorer as soon as possible, but no later than 2 hours after your finish time.
 Placed form in the EYC race bulletin board if no RC member is present.